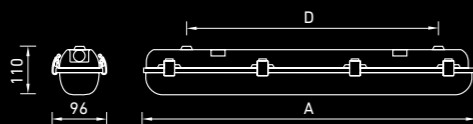




ARCTIC STANDARD HE



Name	A	D	lm	W	lm/W	Kg	Code
ARCTIC STANDARD 1200 TH 4000K HE /E/	1280	932	4780	36	131	2.2	1997033520
ARCTIC STANDARD 1200 TH 5000K HE /E/	1280	932	4800	36	132	2.2	1997033530
ARCTIC STANDARD 1500 TH 4000K HE /E/	1585	1234	5960	44	133	3.2	1997033530
ARCTIC STANDARD 1500 TH 5000K HE /E/	1582	1234	6000	45	133	3.2	1997033536

About

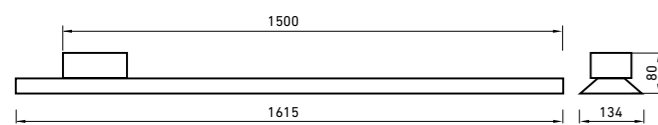
A cost-effective modification of dust- and waterproof luminaires in a narrow housing (TH). The efficiency of luminaires is 133 lm/w. ARCTIC TH can easily replace traditional and tubular fluorescent lamps since their dimensions are similar. Recommended installation height is up to 5 meters.

16960 m²

Standard model of industrial enterprise



FLORA LED



Name	lm	W	lm/W	Kg	Code
FLORA LED 200 D120 Universal /E/	28300	220	129	4.2	1997033720

About

FLORA LED plant illuminators for industrial greenhouses and other protected ground facilities. A replacement for artificial supplementary luminaires with sodium-vapour lamps of up to 600 W.



Sales in the EU:
Lighting Technologies Europe GmbH
Fraunhoferstrasse 7, 85737 Ismaning, Germany
T +49 89 550 59 86 11
eu.sales@LTcompany.com

Lighting Technologies Europe GmbH
Alte Duisburger Strasse 11 | 47119 Duisburg | Germany
T +49 173 637 4552
eu.sales@LTcompany.com

Sales & Production in Spain:
Lighting Technologies TRQ, S.L.U. Avda. Pio XII,
38, 12500 Vinaros, Spain
T +34 (964) 404 024
info@trqsl.com www.trqsl.com

Sales & Production in India:
Lighting Technologies India Pvt. Ltd.
MC Junction, No. 201, 3rd Main, Kasturi Nagar,
Bangalore, 560043, India
T +91 (991) 638 03 99
india@LTcompany.com

Sales & Production in Ukraine:
"Vitava" Company" Ltd.
6, Vladimira Sosiury Str.,
02090, Kiev, Ukraine
T +38 (044) 585 47 88
info@kiev.LTcompany.com

Sales & Production in Russia:
LLC "Lighting Technologies IGC"
#2B bld. 7, Otradnaya Str.,
127273, Moscow, Russia
T +7 (495) 995 55 95
export.sales@LTcompany.com

Sales in Kazakhstan:
"Lighting Technologies Kazakhstan" LLP
#905/906, 4, Bejbitsilik,
010000, Nur-Sultan, Kazakhstan
T +7 (717) 279 76 40
astana@LTcompany.com

"Vitava" Company" Ltd.
8, Entuziastov Avenue,
07100, Slavutich, Ukraine
T +38 (044) 585 47 88
info@slv.LTcompany.com

LLC "Lighting Technologies IGC"
#11, build. A, Magistralnaya Str.,
390010, Ryazan, Russia
T +7 (495) 995 55 95
info@rzn.LTcompany.com

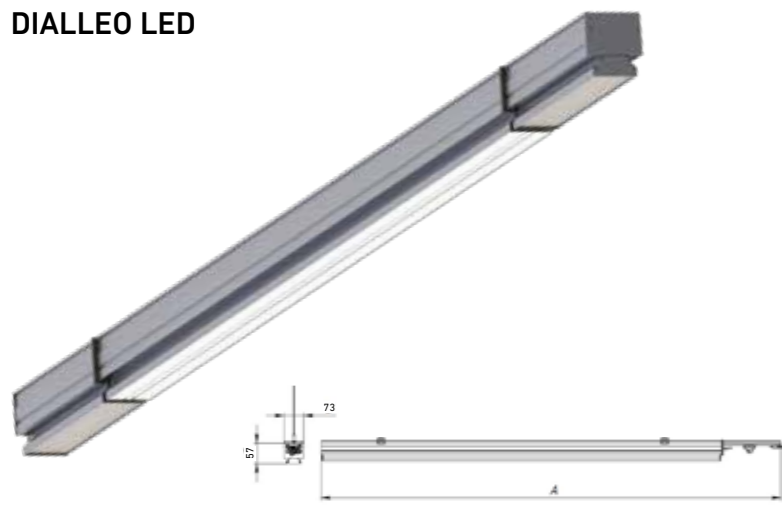


www.LTcompany.com/en

Lighting Technologies

INDUSTRIAL

DIALLEO LED



Name	A	Kg	Code
DIALLEO LED TRACK 5x2,5 1500mm AL (U) /E/	1737	2,4	1997030460
DIALLEO LED TRACK 5x2,5 3000mm AL (U) /E/	3249	2,4	1997030470
DIALLEO LED TRACK 7x2,5 1500mm AL (U) /E/	1737	2,4	1997030490
DIALLEO LED TRACK 7x2,5 3000mm AL (U) /E/	3249	2,4	1997030500

About

DIALLEO LED a new innovative and different series of continuous IP65 LED light line system. DIALLEO LED is the perfect solution to change from conventional continuous line system to LED. The lighting units together with the prewired trunking reduces the time of installation and maintenance. Designed to be used from car parks and production halls to warehouses and logistic areas.

Name	lm	W	lm/W	Kg	Code
DIALLEO LED 35 (PMMA/AL) D60 4000K (U) /E/	6150	37	166	4,5	1997035590
DIALLEO LED 50 (PMMA/AL) D60 4000K (U) /E/	8650	52	166	4,5	1997030370
DIALLEO LED 70 (PMMA/AL) D60 4000K (U) /E/	11900	73,5	162	4,5	1997030420



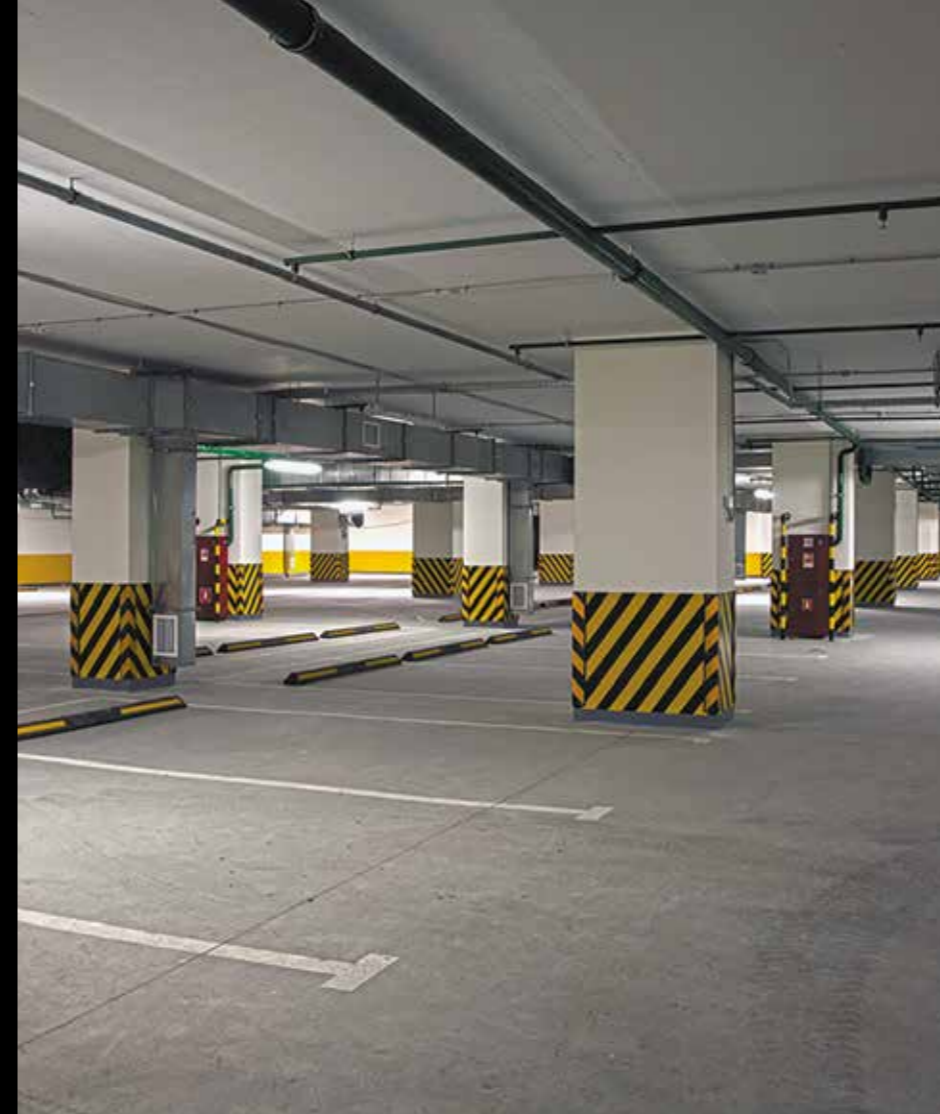
SLICK ECO LED HE



Name	lm	W	lm/W	Kg	Code
SLICK.PRS ECO LED 30 5000K HE /E/	4400	30	147	2,5	1997031310
SLICK.PRS ECO LED 30 4000K HE /E/	4100	30	137	2,5	1997031300
SLICK.PRS ECO LED 45 5000K HE /E/	6300	40	158	2,5	1997031330
SLICK.PRS ECO LED 45 4000K HE /E/	6100	40	153	2,5	1997031320
SLICK.PRS ECO LED 60 5000K HE /E/	7700	50	154	2,5	1997031370
SLICK.PRS ECO LED 60 4000K HE /E/	7500	52	144	2,5	1997031360

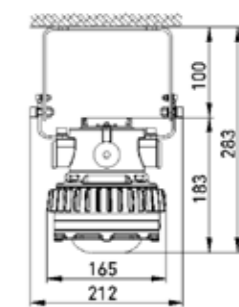
About

SLICK.PRS ECO LED HE (high efficiency luminaires) is the best solution for illuminating workshops, technical premises, underroof parking lots, and small warehouses. Can replace all types luminaires with fluorescent lamps.



ONIX LED Ex

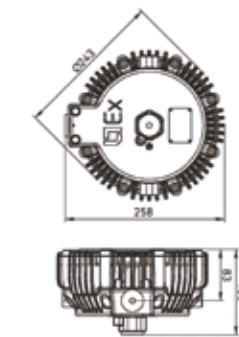
Name	lm	W	lm/W	Kg
Onix 15B Ex	2500	18	139	4,6
Onix 25B Ex	3700	28	132	4,6



About

The ONIX LED Ex series of explosion-proof luminaires designed to provide external and internal lighting at oil and gas facilities and intended to replace luminaires with incandescent lamps up to 200 W.

Name	lm	W	lm/W	Kg	Code
ZENITH LED 30 D120 B Ex /E/	3700	32	116	7,6	1997029980
ZENITH LED 50 D120 B Ex /E/	5400	46	117	7,6	1997029960

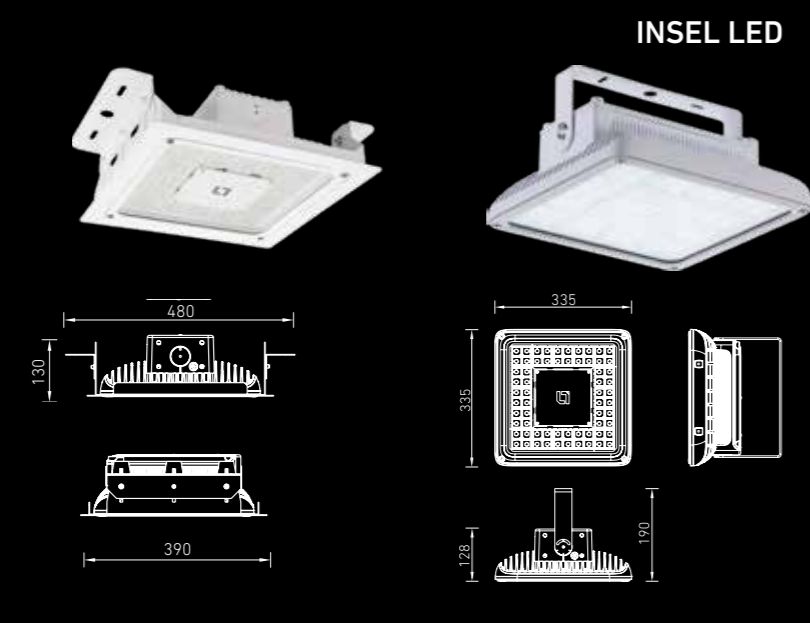


ZENITH LED Ex



About

ZENITH LED Ex luminaires are designed for external and internal illumination in explosion-hazardous areas of all classes of oil and gas and petrochemical facilities and premises, as well as underground mine works hazardous due to afterdamp and/or combustible dust. Optimal substitute for Ex-luminaires with sodium and metal halogen lamps of up to 150 W.



Name	lm	W	lm/W	Kg	Code
IINSEL LB/S LED 80 D30 5000K G2 /E/	10600	76	140	10,0	1997037010
IINSEL LB/S LED 140 D60 5000K G2 /E/	18500	132	140	11,5	1997030700
IINSEL LB/S LED 170 D60 5000K G2 /E/	23100	165	140	11,5	1997032530

About

A new series of recessed (INSEL LB/R LED that specially designed for gas station shed) or surface mounting (INSEL LB/S LED for industrial applications) luminaires. Wide range of operating temperatures from -40°C to +60°C. INSEL LB LED is suitable for replacement of luminaires with 250 W mercury lamps or 150 W metal-halide lamps. The luminaire can be optionally equipped with dimmable 1-10 V or DALI drivers for integration into the overall control system of the factory, as well as with recessed light and motion sensors, connector for through wiring of luminaires

SLICK PC/SMC LED



Name	lm	W	lm/W	Kg	Code
SLICK.PRS LED 35 (PC/SMC) 4000K /E/	5400	36	150	1,75	1997035860

About

Series of linear high-efficiency 150 lm/W luminaires as a substitute for luminaires with linear luminescent lamps. Designed for illuminating industrial premises with a maximum ceiling height of 5 m, covered galleries, utility rooms. installation and connection to the mains using a WIELAND connector.

HB LED G2



Name	lm	W	lm/W	Kg	Code
HB LED 75 D60 4000K G2 /E/	8200	65	126	3,5	1997031450
HB LED 75 D60 5000K G2 /E/	8400	65	129	3,5	1997031030
HB LED 150 D60 4000K G2 /E/	17000	131	130	7,0	1997031570
HB LED 150 D60 5000K G2 /E/	17700	131	135	7,0	1997031110
HB LED 225 D60 4000K G2 /E/	26000	195	133	11	1997031510
HB LED 225 D60 5000K G2 /E/	26600	195	136	11	1997031160

About

The second generation of modular industrial luminaire for high ceiling. High degree of protection (IP65) and high luminous flux. Thanks to modern LEDs with lenses used as the light source, this luminaire can be safely called the most energy efficient in the industrial lighting segment. Special versions of the luminaire, such as for logistic areas with a special asymmetric 50x20 degree optic and a version for areas where temperature are be up to 75 degrees, are also manufactured.



Name	lm	W	lm/W	Kg	Code
INOX LED 80 (GL/SS) 4000K /E/	8300	72	115	6,8	1997026250
INOX LED 80 (GL/SS) 5000K /E/	10000	82	122	7,4	1997025280

About

A high performance LED luminaire with IP65 protection. It is recommended for use in chemical areas and laboratories as well as in fire-hazardous areas. Mounting height of 5 to 8 meters. The collapsible design of the housing is made of stainless steel. Tempered glass, opal or transparent polycarbonate can be used as a diffuser.